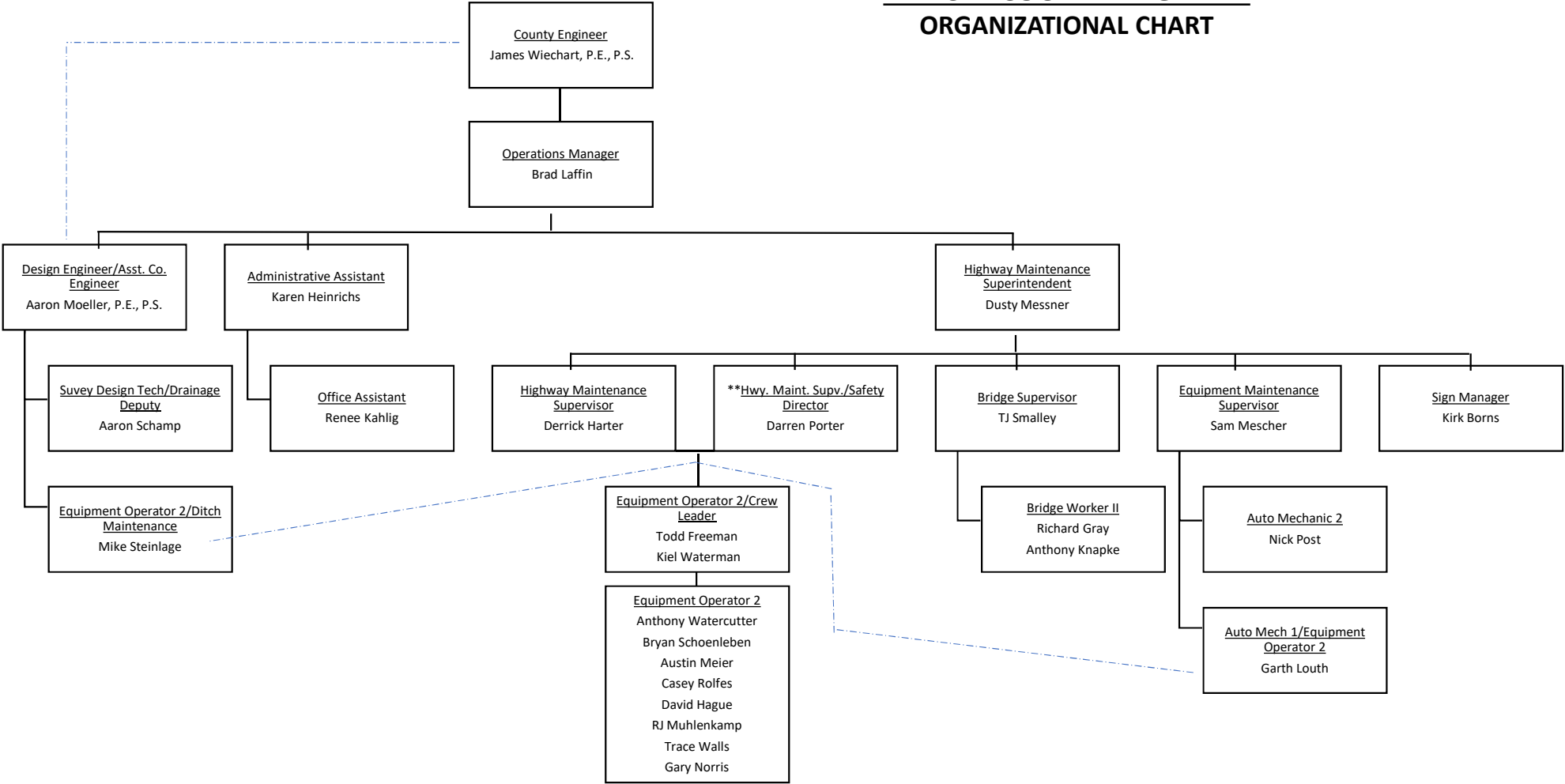
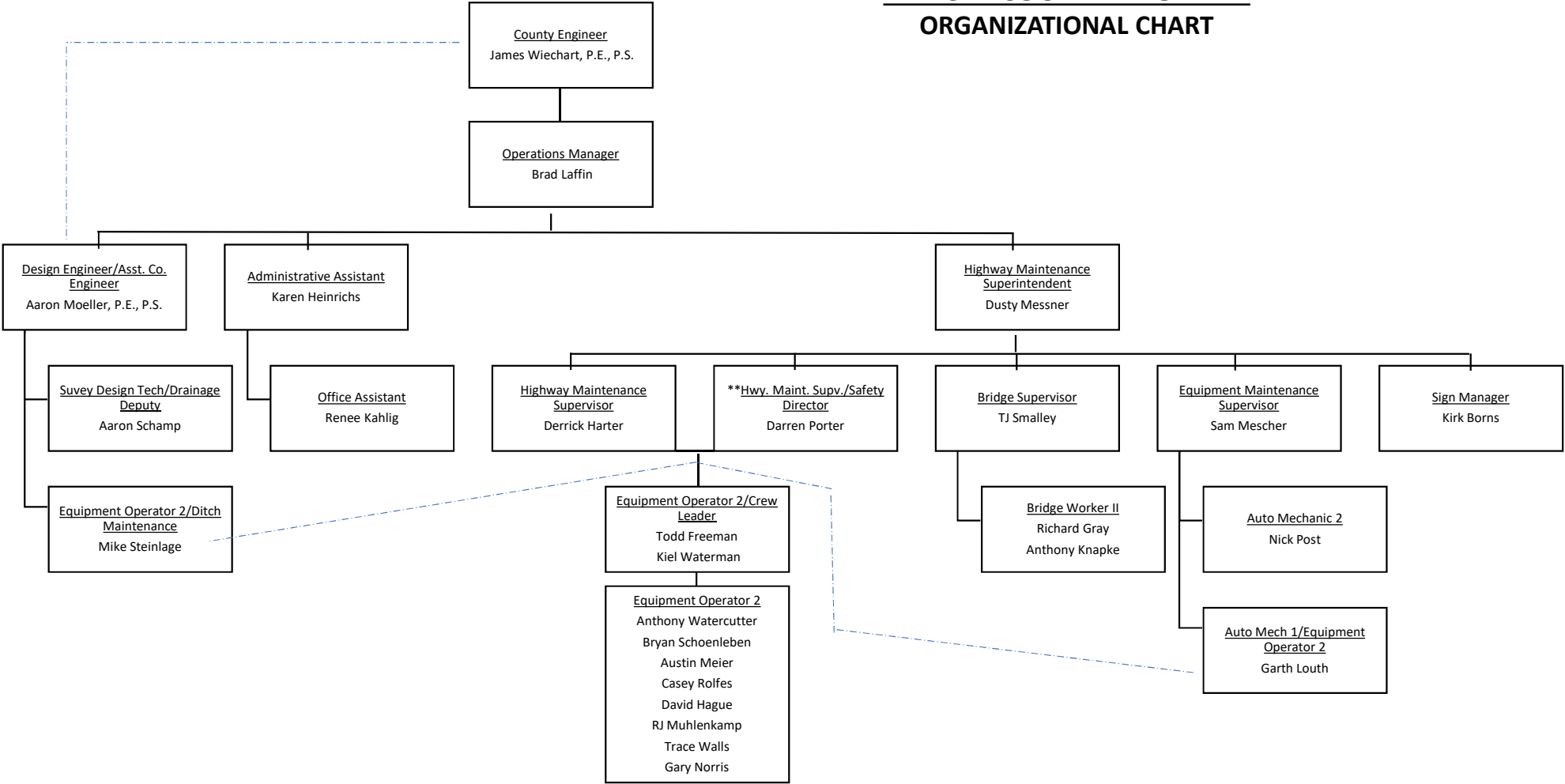


MERCER COUNTY ENGINEER ORGANIZATIONAL CHART



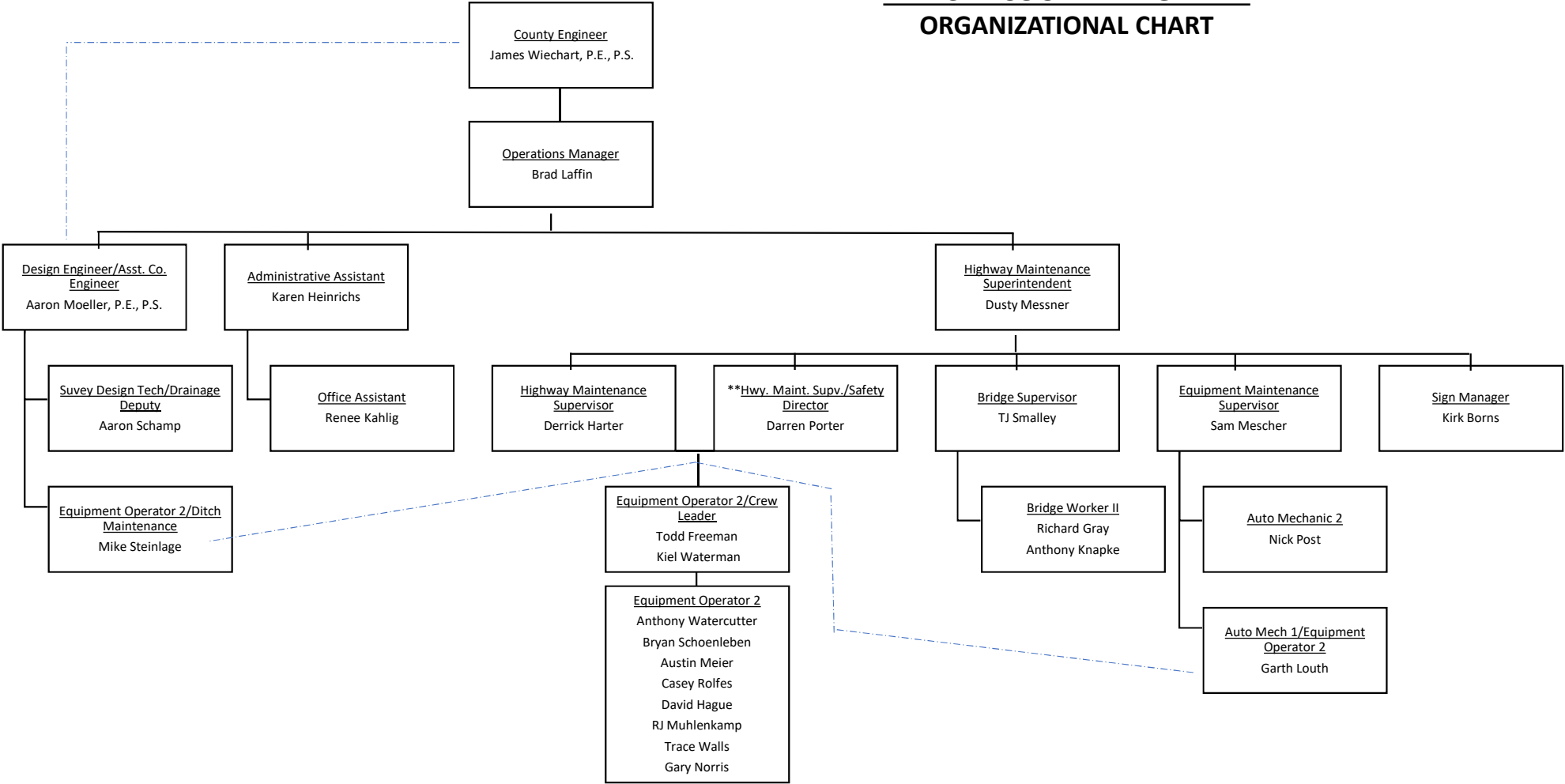
One portion of the job description/role responsibility of the Highway Maintenance Supervisor/Safety Director is that position reviews/manages/recommends safety & loss control activities for the entire organization.

MERCER COUNTY ENGINEER ORGANIZATIONAL CHART



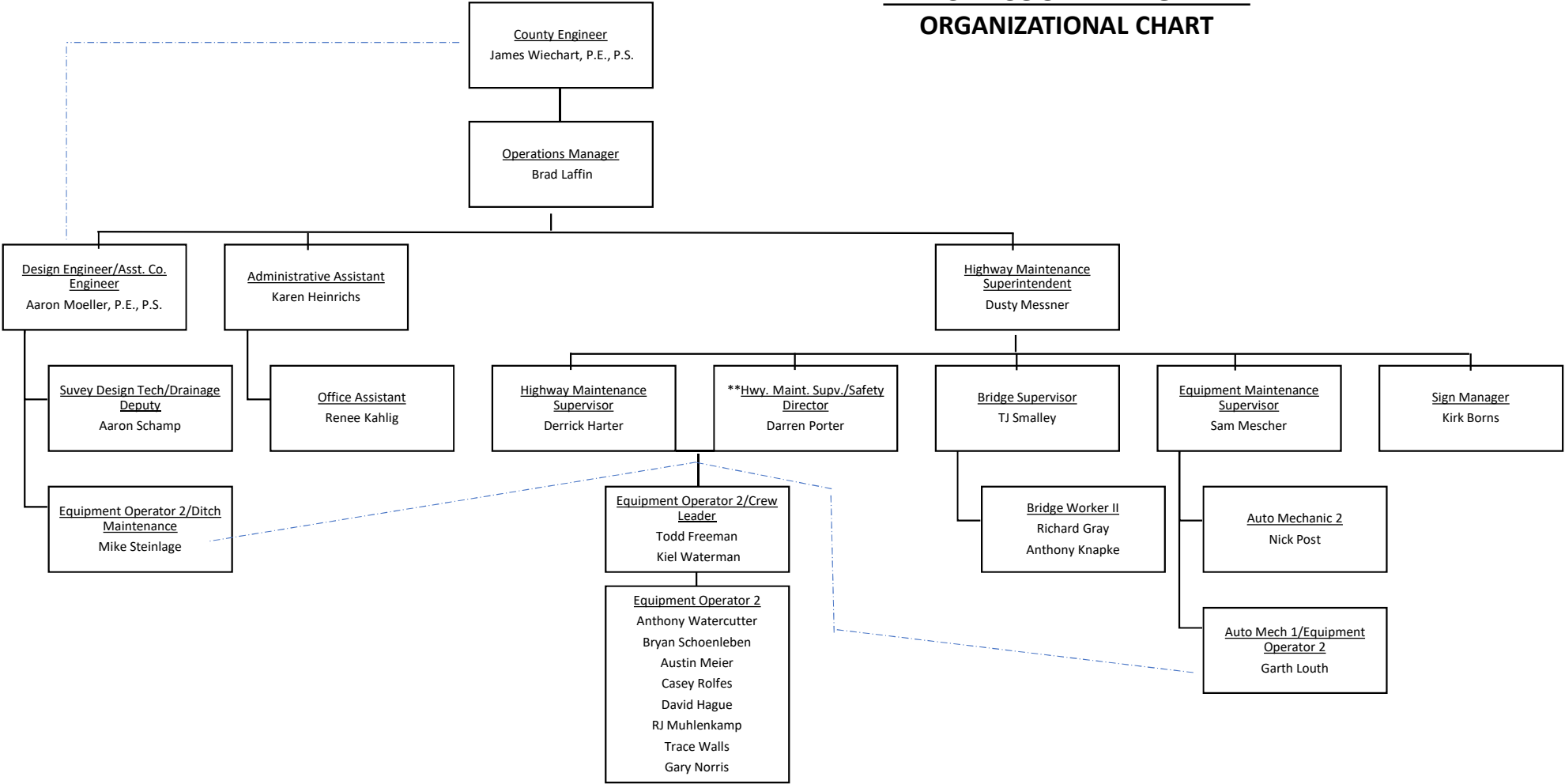
One portion of the job description/role responsibility of the Highway Maintenance Supervisor/Safety Director is that position reviews/manages/recommends safety & loss control activities for the entire organization.

MERCER COUNTY ENGINEER ORGANIZATIONAL CHART



One portion of the job description/role responsibility of the Highway Maintenance Supervisor/Safety Director is that position reviews/manages/recommends safety & loss control activities for the entire organization.

MERCER COUNTY ENGINEER ORGANIZATIONAL CHART



One portion of the job description/role responsibility of the Highway Maintenance Supervisor/Safety Director is that position reviews/manages/recommends safety & loss control activities for the entire organization.