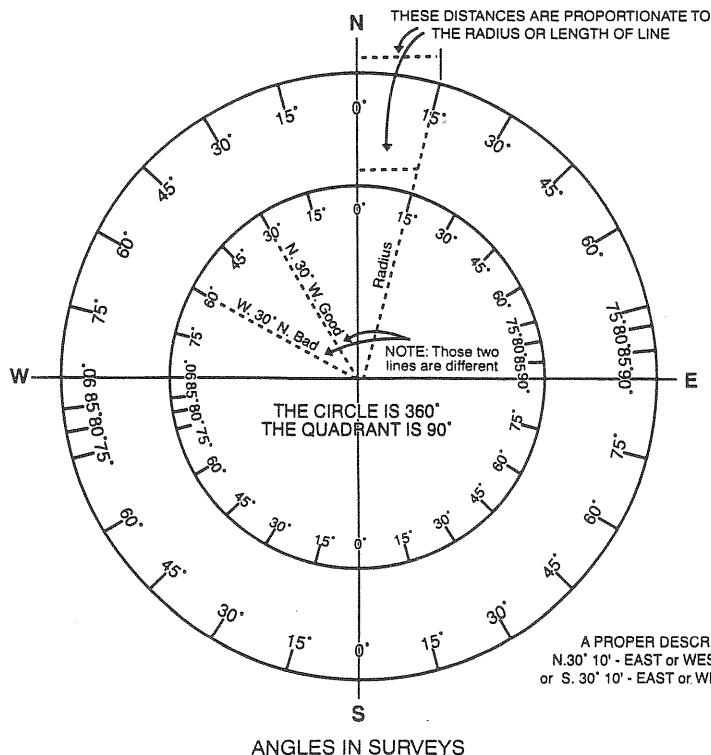
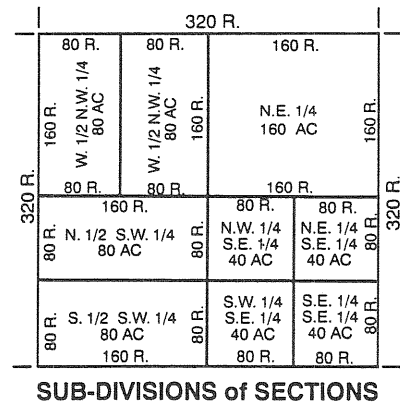
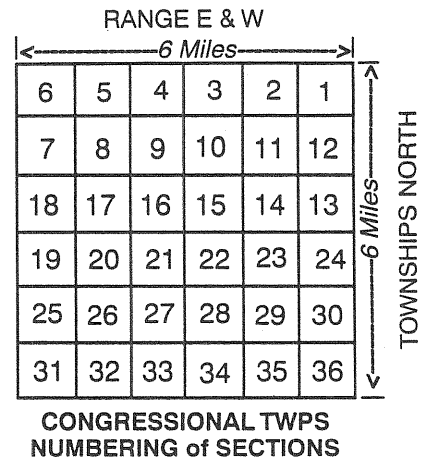
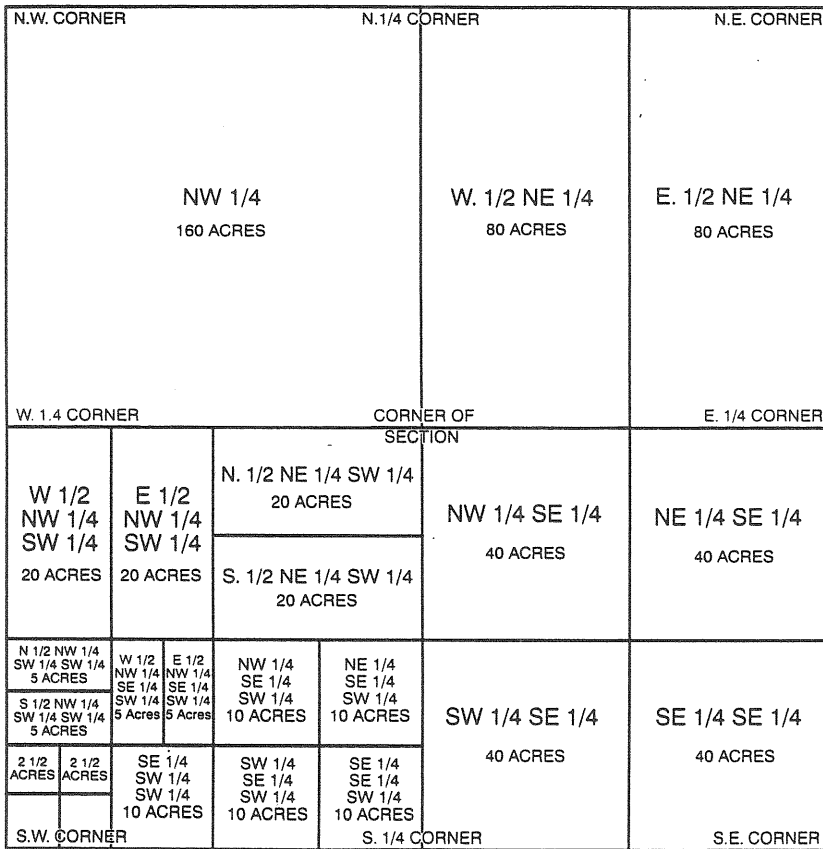


A SECTION OF LAND - 640 ACRES

Quarter Sections and Subdivisions Therefore



CONVERSION TABLE

RODS	FEET
1	16.5
2	33.0
3	49.5
4	66.0
5	82.5
6	99.0
7	115.5
8	132.0
9	148.5
10	165.0

1 MILES = 320 RODS = 5280 FEET
 1/2 MI = 160 R. = 2640 FT.
 1/4 MI = 80 R. = 1320 FT.
 1 ACRE = 160 SQ. ROD = 43,560 SQ. FT.
 LINEAR FEET X 0.0606 = LIN. RODS
 AREA IN SQ. FT X 0.000023 = ACRES
 AREA IN SQ. RDS X 0.00625 = ACRES

IN OLD DESCRIPTIONS

THE CHAIN WAS 4 RODS
 THE LINK WAS 0.04 ROD
 POLE, PERCH & ROD EACH = 16.5 FT.
 A SECTION CONTAINS 640 ACRES
 A QUARTER SECTION IS 160 ACRES

EXAMPLE:
 137.84 R. = 2274.36

RODS	FEET
100	1650.00
30	495.00
7	115.50
0.8	13.20
00.4	0.66
TOTAL	=2274.36

A PROPER DESCRIPTION:
 N. 30° 10' - EAST or WEST 32 RODS
 or S. 30° 10' - EAST or WEST 32 RODS

ALL DESCRIPTIONS MUST GIVE DIRECTION & LENGTH OF ALL LINES - ALL ANGLES MUST BE FROM MERIDIAN-STANDARD SYMBOLS - DEGREE, 30'- MINUTES, 25'- SECONDS, 45" - IN CASE OF DOUBT, CONSULT ANY ENGINEER OR SURVEYOR.